

## SIRIUS HRI 440 W H

SIRIUS HRI | High-pressure discharge lamps with reflector



### Areas of application

- Concert lighting
- Club and disco
- Stage and theatre
- Studio, TV and film
- Architecture & Architainment

### Product family benefits

- Lightweight and compact reflector lamps
- Perfectly suited for small and lightweight moving heads
- Optimized burner design allows any burning position
- High luminance through very short arc and high pressure
- Bright light for brilliant light effects
- Long lifetime
- Easy lamp replacement
- Stable light output over the entire lifetime



Technical data

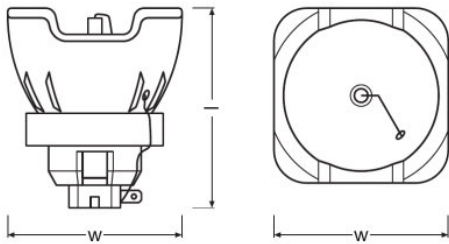
Electrical data

Nominal wattage	44000 W
Nominal current	53 A
Nominal voltage	830 V

Photometrical data

Nominal luminous flux	18000 lm
Color temperature	7000 K
Color rendering index Ra	75

Dimensions & weight



Diameter	650 mm
Length	600 mm
Arc length	1.3 mm

Lifespan

Lifespan	1500 h
----------	--------

Additional product data

Category	CUSTOMIZED
----------	------------

Capabilities

Burning position	Any
Working distance	60 mm

Environmental information

Information according Art. 33 of EU Regulation (EC) 1907/2006 (REACH)	
Date of Declaration	06-03-2024
Primary Article Identifier	4052899509528   4052899576735
Candidate List Substance 1	No declarable substances contained
Declaration No. in SCIP database	In work

Product datasheet

Safety advice

Because of their high luminance, UV radiation and high internal pressure during operation, SIRIUS HRI lamps may only be operated in enclosed lamp casings specially constructed for the purpose. Appropriate filters must ensure that UV radiation is reduced to an acceptable level. Mercury is released if the lamp breaks. Special safety precautions must be taken. Information on safety and handling is available on request or can be found in the leaflet included with the lamp or in the operating instructions.

Logistical Data

Product code	Product description	Packaging unit (Pieces/Unit)	Dimensions (length x width x height)	Volume	Gross weight
4052899509528	SIRIUS HRI 440 W H	Unpacked 1	600 mm x 400 mm x 163 mm	39.12 dm <sup>3</sup>	8902.00 g
4052899509535	SIRIUS HRI 440 W H	Shipping carton box 60	414 mm x 352 mm x 310 mm	45.18 dm <sup>3</sup>	11046.00 g
4052899576735	SIRIUS HRI 440 W H	Folding carton box 1	87 mm x 87 mm x 103 mm	0.78 dm <sup>3</sup>	207.00 g
4052899576742	SIRIUS HRI 440 W H	Shipping carton box 2	186 mm x 96 mm x 115 mm	2.05 dm <sup>3</sup>	462.00 g
4052899576759	SIRIUS HRI 440 W H	Shipping carton box 20	507 mm x 203 mm x 264 mm	27.17 dm <sup>3</sup>	4631.00 g

The mentioned product code describes the smallest quantity unit which can be ordered. One shipping unit can contain one or more single products. When placing an order, for the quantity please enter single or multiples of a shipping unit.

Disclaimer

Subject to change without notice. Errors and omission excepted. Always make sure to use the most recent release.